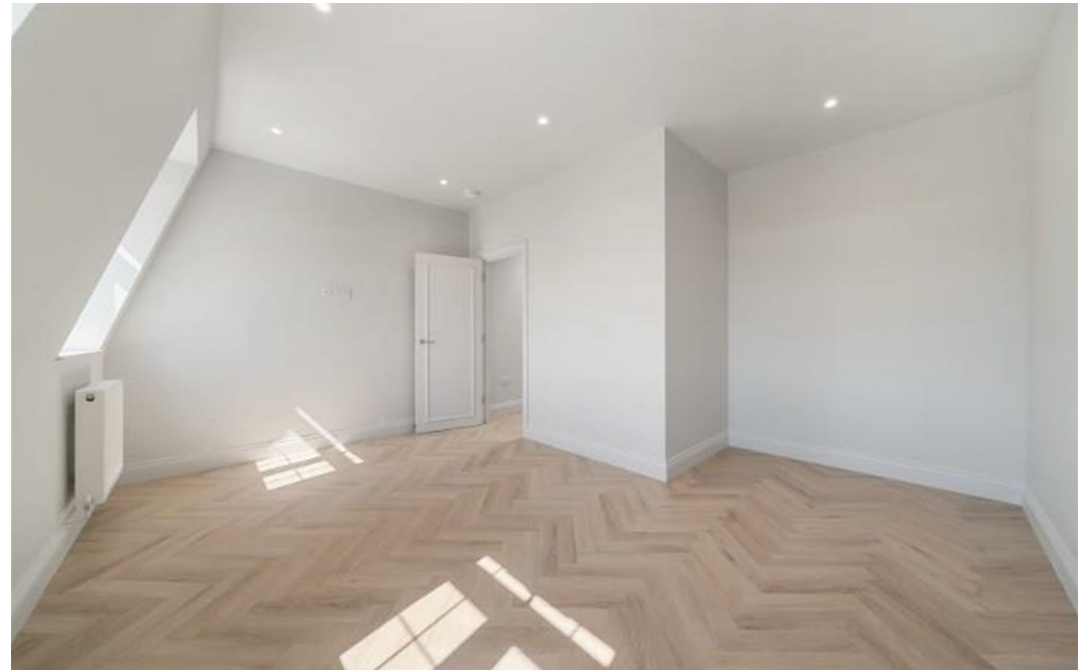




Belair Court, Edgware HA8 7EL

**£360,000
Leasehold**





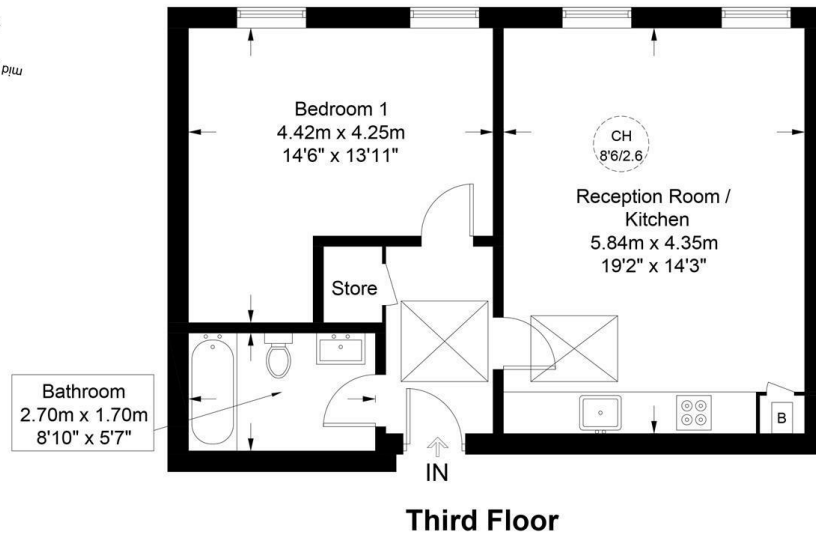
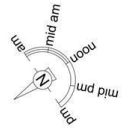
- NEWLY BUILT LUXURY ONE BEDROOM APARTMENT
- LIFT +CCTV
- STUNNING BATHROOM

- HIGH SPECIFICATION FINISH
- SECURE PARKING
- EPC RATING B: COUNCIL TAX TBC

- CONVENIENT LOCATION
- FULLY EQUIPPED KITCHEN
- CLOSE TO ALL AMENITIES AND TRANSPORT LINKS

Bel Air Court, HA8

Approximate Gross Internal Area = 569 sq ft / 52.9 sq m



PRIME PERSPECTIVES

This plan is for layout guidance only and is not drawn to scale unless stated. All dimensions, including windows, doors, and the Total Gross Internal Area (GIA), are approximate. For precise measurements, please consult a qualified architect or surveyor before making any decisions based on this plan.



Energy Efficiency Rating		Current	Potential
Very energy efficient - lower running costs			
(92 plus) A			
(81-91) B		85	85
(69-80) C			
(55-68) D			
(39-54) E			
(21-36) F			
(1-20) G			
Not energy efficient - higher running costs			
England & Wales		EU Directive 2002/91/EC	

This exclusive newly built one bedroom apartment sits atop an existing residential block in Edgware, and is a thoughtfully designed modern home, providing a quiet retreat at the end of each day, whilst leaving the city behind. It creates a limited opportunity to own a brand new home in an established and well-connected location.

Set back from the main road, Bel Air Court enjoys a peaceful position while still being moments from local shops, cafés, and transport links. Whether heading into central London or staying local, everything you need is within easy reach. The apartment's interior reflects a clean, modern aesthetic, - designed to make everyday living simple and enjoyable. The open-plan layout encourages easy entertaining, and is finished to a high standard to ensure long-term comfort and quality.



ABC EDGWARE
 020 8621 4000
 sales@abcestates.co.uk
 www.abcestates.co.uk

